

**Hyndburn Borough Council
Treasury Management Practices 2019/20**

Treasury Management Practices

Contents

		Paragraph
TMP 1	Treasury risk management	1.1 – 1.8.1
TMP 2	Performance measurement	2.1 – 2.3.5
TMP 3	Decision–making and analysis	3.1 – 3.1.3.3
TMP 4	Approved instruments, methods and techniques	4.1 – 4.6
TMP 5	Organisation, clarity and segregation of responsibilities, and dealing arrangements	5.1 – 5.10
TMP 6	Reporting requirements and management information arrangements	6.1 – 6.9
TMP 7	Budgeting, accounting and audit arrangements	7.1 – 7.4
TMP 8	Cash and cash flow management	8.1 – 8.6
TMP 9	Money laundering	9.1 – 9.6
TMP 10	Training and qualifications	10.1 – 10.7
TMP 11	Use of external service providers	11.1 – 11.2
TMP 12	Corporate governance	12.1

Treasury Management Practices

TMP1 Risk Management

The responsible officer – Deputy Chief Executive - will design, implement and monitor all arrangements for the identification, management and control of treasury management risk, will report at least annually on the adequacy/suitability thereof, and will report, as a matter of urgency, the circumstances of any actual or likely difficulty in achieving the organisation's objectives in this respect, all in accordance with the procedures set out in TMP6 Reporting requirements and Management Information Arrangements. In respect of each of the following risks, the arrangements which seek to ensure compliance with these objectives are set below.

1.1 Credit and Counterparty Risk Management

Credit and counter-party risk is the risk of failure by a counterparty to meet its contractual obligations to the organisation under an investment, borrowing, capital project or partnership financing, particularly as a result of the counterparty's diminished creditworthiness, and the resulting detrimental effect on the organisation's capital or current (revenue) resources.

This organisation regards a key objective of its treasury management activities to be the security of the principal sums it invests. Accordingly, it will ensure that its counterparty lists and limits reflect a prudent attitude towards organisations with whom funds may be deposited, and will limit its investment activities to the instruments, methods and techniques referred to in TMP4 Approved Instruments Methods And Techniques. It also recognises the need to have, and will therefore maintain, a formal counterparty policy in respect of those organisations from which it may borrow, or with whom it may enter into other financing arrangements.

1.1.1 Creditworthiness Policy

This Council applies the creditworthiness service provided by Link Asset Services. This service employs a sophisticated modelling approach utilising credit ratings from the three main credit rating agencies - Fitch, Moody's and Standard and Poor's. The credit ratings of counterparties are supplemented with the following overlays:

- credit watches and credit outlooks from credit rating agencies;
- CDS spreads to give early warning of likely changes in credit ratings;
- sovereign ratings to select counterparties from only the most creditworthy countries.

This modelling approach combines credit ratings, credit Watches and credit Outlooks in a weighted scoring system which is then combined with an overlay of CDS spreads for which the end product is a series of colour coded bands which indicate the relative creditworthiness of counterparties. These colour codes are used by the Council to determine the suggested duration for investments. The Council will therefore use counterparties within the following durational bands :

- Yellow 5 years (UK Government debt, or its equivalent, money market funds)
- Dark pink 5 years for Ultra-Short Dated Bond Funds with a credit score of 1.25
- Light pink 5 years for Ultra-Short Dated Bond Funds with a credit score of 1.5
- Purple 2 years
- Blue 1 year (only applies to nationalised or semi nationalised UK Banks)
- Orange 1 year
- Red 6 months
- Green 100 days
- No colour not to be used

Treasury Management Practices

The Link Asset Services' creditworthiness service uses a wider array of information than just primary ratings. Furthermore, by using a risk weighted scoring system, it does not give undue preponderance to just one agency's ratings.

Typically the minimum credit ratings criteria the Council use will be a Short Term rating (Fitch or equivalents) of F1 and a Long Term rating of A-. There may be occasions when the counterparty ratings from one rating agency are marginally lower than these ratings but may still be used. In these instances consideration will be given to the whole range of ratings available, or other topical market information, to support their use.

All credit ratings will be monitored weekly. The Council is alerted to changes to ratings of all three agencies through its use of the Link Asset Services' creditworthiness service.

- if a downgrade results in the counterparty / investment scheme no longer meeting the Council's minimum criteria, its further use as a new investment will be withdrawn immediately.
- in addition to the use of credit ratings the Council will be advised of information in movements in credit default swap spreads against the iTraxx benchmark and other market data on a daily basis via its Passport website, provided exclusively to it by Link Asset Services. Extreme market movements may result in downgrade of an institution or removal from the Council's lending list.

Sole reliance will not be placed on the use of this external service. In addition this Council will also use market data and market information, information on any external support for banks to help support its decision making process.

Country and sector limits

The Council has determined that due to the uncertainty of Brexit it will use any UK bank regardless that the sovereign credit rating may be reduced from its current AA rating position. It will only use approved counterparties from other countries with a minimum sovereign credit rating of AA- from Fitch. The list of countries that qualify using this credit criteria as at the date of this report are shown below.

This list is based on those countries which have sovereign ratings of AA- or higher (at the date of this report) and also have banks operating in sterling markets which have credit ratings of green or above in the Link Asset Services credit worthiness service.

AAA

- Australia
- Canada
- Denmark
- Germany
- Luxembourg
- Netherlands
- Norway
- Singapore
- Sweden
- Switzerland

AA+

- Finland
- U.S.A.

Treasury Management Practices

AA

- Abu Dhabi (UAE)
- France
- Hong Kong
- UK

AA-

- Belgium
- Qatar

This list will be added to, or deducted from, by officers should ratings change in accordance with this policy.

Treasury Management Practices

Maximum maturity periods and amounts to be placed in different types of investment instrument are as follows: -

Maturities up to a maximum of 1 year

Organisation	Minimum 'High' Credit Criteria	Max Amount	Max Period
Debt Management Agency Deposit Facility	-	£2m	1 year
Term Deposits - Local Authorities	-	£2m	1 year
Term Deposits – Banks & Building Societies	Short-term, Long-term, Viability, Support.	£2m	Colour Code Dependant but max of 1 year
Liquid Deposits - Nat West Bank	Short-term, Long-term, Viability, Support.	£3m	1 year
Money Market Funds	AAA long-term rating	£2m	1 year
UK Government Support to the banking sector	Sovereign Rating	£2m	1 year

Maturities in excess of 1 year

Organisation	Minimum 'High' Credit Criteria
Debt Management Agency Deposit Facility	-
Term Deposits - Local Authorities	-
Term Deposits – Banks & Building Societies **	Short-term, Long-term, Viability, Support.
Money Market Funds	AAA long-term rating
UK Government Support to the banking sector	Sovereign Rating

Treasury Management Practices

1. Diversification: this organisation will avoid concentrations of lending and borrowing by adopting a policy of diversification. It will therefore use the following: -
 - Maximum amount to be placed with any one institution - £2m - with the exception of a deposit in Nat West Liquidity Account where the investment will not exceed £3m.
 - Group limits where a number of institutions are under one ownership – maximum of £10m.
2. Investments will not be made with counterparties that do not have a credit rating in their own right. The definition of ‘**high credit quality**’ in order to determine what are specified investments as opposed to non specified investments which do not have high credit ratings is set out at the end of TMP1 in schedule 1.

1.2 Liquidity Risk Management

This is the risk that cash will not be available when it is needed, that ineffective management of liquidity creates additional unbudgeted costs, and that the organisation’s business/service objectives will be thereby compromised.

This organisation will ensure it has adequate though not excessive cash resources, borrowing arrangements, overdraft or standby facilities to enable it at all times to have the level of funds available to it which are necessary for the achievement of its business/service objectives. This organisation will only borrow in advance of need where there is a clear business case for doing so and will only do so for the current capital programme or to finance future debt maturities.

1.2.1. Amounts of approved minimum cash balances and short-term investments

The Treasury Management section shall seek to minimise the balance held in the Council’s main bank accounts at the close of each working day. Borrowing or lending shall be arranged in order to achieve this aim.

1.2.2. Details of:

- a. Standby facilities

At the end of each financial day any unexpected surplus funds are transferred to the Nat West Liquidity Account which is available from the Council’s main bank. The balance on this account is instantly accessible if the group bank account becomes overdrawn.
- b. Bank overdraft arrangements

There is no overdraft arrangement for the Council’s accounts. Bank Charges will be calculated on overdrawn amounts at base rate (currently 0.75%) plus 4%.
- c. Short-term borrowing facilities

The Council may access temporary loans through approved brokers on the London money market. The approved borrowing limit for short term debt is £10m.
- d. Insurance/guarantee facilities

There are no specific insurance or guarantee facilities as the above arrangements are regarded as being adequate to cover all unforeseen occurrences.

Treasury Management Practices

1.3 Interest Rate Risk Management

There is a risk that fluctuations in the levels of interest rates would create an unexpected or unbudgeted burden on the organisation's finances, against which the organisation has failed to protect itself adequately.

This Council will manage its exposure to fluctuations in interest rates with a view to containing its interest costs, or securing its interest revenues, in accordance with the amounts provided in its budgetary arrangements as amended in accordance with TMP6 Reporting requirements and management information arrangements.

It will achieve this by the prudent use of its approved financing and investment instruments, methods and techniques, primarily to create stability and certainty of costs and revenues, but at the same time retaining a sufficient degree of flexibility to take advantage of unexpected, potentially advantageous changes in the level or structure of interest rates. This should be the subject to the consideration and, if required, approval of any policy or budgetary implications.

1.3.1 Details of approved interest rate exposure limits

The Treasury Indicators for 2019/20 include a figure of £35 million for External Debt – Authorised Limit.

1.3.2 Trigger points and other guidelines for managing changes to interest rate levels

The Treasury Indicators for 2019/20 include a figure of £20 million for External Debt – Operational Boundary.

1.3.3 Upper limit for fixed interest rate exposure

The Prudential Indicators for 2019/20 include an estimated exposure of 100% of principal sums outstanding in respect of borrowing at fixed interest rates.

1.3.4 Upper limit for variable interest rate exposure

The prudential Indicators for 2019/20 include an estimated exposure of 100% of principal sums outstanding in respect of borrowing at variable interest rates.

1.3.5 Policies concerning the use of instruments for interest rate management.

- a. Forward Dealing
Consideration will be given to dealing from forward periods dependent upon market conditions.
- b. Callable Deposits
The Council may use callable deposits as part as of its Annual Investment Strategy (AIS). The credit criteria and maximum periods are set out in the Schedule of Specified and Non Specified Investments appended to the AIS.
- c. LOBOS (borrowing under lender's option/borrower's option)
Use of LOBOs are considered as part of the annual borrowing strategy. All borrowing for periods in excess of 365 days must be approved by the Deputy Chief Executive.

Treasury Management Practices

1.4 Exchange Rate Risk Management

The risk that fluctuations in foreign exchange rates create an unexpected or unbudgeted burden on the organisation's finances, against which the organisation has failed to protect itself adequately.

The Council will manage its exposure to fluctuations in exchange rates so as to minimise any detrimental impact on its budgeted income/expenditure levels.

1.5 Refinancing Risk Management

The risk that maturing borrowings, capital, project or partnership financings cannot be refinanced on terms that reflect the provisions made by the organisation for those refinancing, both capital and current (revenue), and/or that the terms are inconsistent with prevailing market conditions at the time.

This Council will ensure that its borrowing, private financing and partnership arrangements are negotiated, structured and documented, and the maturity profile of the monies so raised are managed, with a view to obtaining offer terms for renewal or refinancing, if required, which are competitive and as favourable to the organisation as can reasonably be achieved in the light of market conditions prevailing at the time.

It will actively manage its relationships with its counterparties in these transactions in such a manner as to secure this objective, and will avoid overreliance on any one source of funding if this might jeopardise achievement of the above.

1.5.1. Debt/Other Capital Financing, Maturity Profiling, Policies and Practices

The Council will establish through its Prudential and Treasury Indicators the amount of debt maturing in any year/period.

Any debt rescheduling will be considered when the difference between the refinancing rate and the redemption rate is most advantageous and the situation will be continually monitored in order to take advantage of any perceived anomalies in the yield curve. The reasons for any rescheduling to take place will include:

- a) the generation of cash savings at minimum risk;
- b) to reduce the average interest rate;
- c) to amend the maturity profile and /or the balance of volatility of the debt portfolio.

All rescheduling will be reported to the Cabinet at as soon as possible after the debt rescheduling exercise.

1.5.2. Projected Capital Investment Requirements

The Deputy Chief Executive will prepare a three year plan for capital expenditure for the Council. The capital plan will be used to prepare a three year revenue budget for all forms of financing charges.

In addition the Deputy Chief Executive will draw up a capital strategy report which will give a longer term view.

The definition of capital expenditure and long term liabilities used in the Code will follow recommended accounting practice as per the Code of Practice on Local Authority Accounting.

Treasury Management Practices

1.5.3. Policy Concerning Limits on Affordability and Revenue Consequences of Capital Financing

In considering the affordability of its capital plans, the Council will consider all the resources currently available/estimated for the future together with the totality of its capital plans, revenue income and revenue expenditure forecasts for the forthcoming year and the two following years and the impact these will have on council tax. It will also take into account affordability in the longer term beyond this three year period.

The Council will use the definitions provided in the Prudential Code for borrowing (65), capital expenditure (66), capital financing requirement (67), debt (68), financing costs (69), investments (70), net borrowing (71), net revenue stream (72), other long term liabilities (73).

1.6 Legal and Regulatory Risk Management

The risk that the organisation itself, or an organisation with which it is dealing in its treasury management activities, fails to act in accordance with its legal powers or regulatory requirements, and that the organisation suffers losses accordingly.

The Council will ensure that all of its treasury management activities comply with its statutory powers and regulatory requirements. It will demonstrate such compliance, if required to do so, to all parties with whom it deals in such activities. In framing its credit and counterparty policy under TMP1[1] credit and counterparty risk management, it will ensure that there is evidence of counterparties' powers, authority and compliance in respect of the transactions they may effect with the organisation, particularly with regard to duty of care and fees charged.

The Council recognises that future legislative or regulatory changes may impact on its treasury management activities and, so far as it is reasonably able to do so, will seek to minimise the risk of these impacting adversely on the organisation.

1.6.1. References to Relevant Statutes and Regulations

The treasury management activities of the Council shall comply fully with legal statute, guidance, Codes of Practice and the regulations of the Council. These are:

English Authorities: -

- Local Government Finance Act 1988 section 114 – duty on the responsible officer to issue a report if the Council is likely to get into a financially unviable position
- Requirement to set a balanced budget – Local Government Finance Act 1992 section 32
- Local Government Act 2003
- S.I. 2003 No.2938 Local Government Act 2003 (Commencement No.1 and Transitional Provisions and Savings) Order 2003 13.11.03
- S.I. 2003 No.3146 Local Authorities (Capital Finance and Accounting) (England) Regulations 2003 and associated commentary 10.12.03
- S.I. 2004 No.533 Local Authorities (Capital Finance) (Consequential, Transitional and Savings Provisions) Order 2004 8.3.04
- S.I. 2004 No.534 Local Authorities (Capital Finance and Accounting) (Amendment) (England) Regulations 2004 8.3.04
- S.I. 2004 no.3055 The Local Authorities (Capital Finance and Accounting) (Amendment) (England) (No.2) Regulations 2004
- S.I. 2006 no.521 Local Authorities (Capital Finance and Accounting) (Amendment) (England) Regulations 2006

Treasury Management Practices

- S.I. 2007 no. 573 Local Authorities (Capital Finance and Accounting) (Amendment) (England) Regulations 2007
- Local Government and Public Involvement in Health Act 2007 s238(2) – power to issue guidance; to be used re: MRP
- S.I. 2008 no. 414 Local Authorities (Capital Finance and Accounting) (Amendment) (England) Regulations 2008
- S.I. 2009 no. 321 Local Authorities (Capital Finance and Accounting) (Amendment) (England) Regulations 2009
- S.I. 2009 no. 2272 The Local Authorities (Capital Finance And Accounting) (England) (Amendment) (No.2) Regulations 2009
- S.I. 2009 no. 3093 The Local Government Pension Fund Scheme (Management and Investment of Funds) Regulations 2009
- S.I. 2010 no. 454 (Capital Finance and Accounting) (Amendment) (England) Regulations 2010
- Localism Act 2011
- S.I. 2012 no.265 Local Authorities (Capital Finance and Accounting) (England) (Amendment) Regulations 2012
- S.I.2012 no 711 The Local Authorities (Capital Finance and Accounting) (England) (Amendment) (No.2) Regulations 2012
- 2012 no.1324 The Local Authorities (Capital Finance and Accounting) (England) (Amendment) (No.3) Regulation 2012
- S.I. No 2269 The Local Authorities (Capital Finance and Accounting) (England) (Amendment) (No.4) Regulations 2012
- S.I. 2013 no 476 The Local Authorities (Capital Finance and Accounting) (England) (Amendment) Regulations 2013
- S.I. 2015 no.234 Accounts and Audit Regulations 2015

Guidance and codes of practice

- CIPFA's Treasury Management Codes of Practice and Guidance Notes 2011,
- CIPFA Prudential Code for Capital Finance in Local Authorities revised 2011
- CIPFA Prudential Code for Capital Finance in Local Authorities – guidance notes for practitioners 2013
- CIPFA Local Authority Capital Accounting – a reference manual for practitioners 2014 edition
- CIPFA Guide for Chief Financial Officers on Treasury Management in Local Authorities 1996
- CIPFA Standard of Professional Practice on Treasury Management 2002
- CIPFA Standard of Professional Practice on Continuous professional Development 2005
- CIPFA Standard of Professional Practice on Ethics 2006
- The Good Governance Standard for Public Services 2004
- CIPFA's Treasury Management Codes of Practice and Guidance Notes 2017.
- CIPFA Prudential Code for Capital Finance in Local Authorities revised 2017.
- CIPFA Prudential Code for Capital Finance in Local Authorities – guidance notes for practitioners 2013.
- MHCLG Revised Guidance on Investments Feb 2017.
- MHCLG guidance on minimum revenue provision – Feb 2017.
- LAAP Bulletins
- IFRS - Code of Practice on Local Authority Accounting in the United Kingdom: A Statement of recommended Practice

Treasury Management Practices

- PWLB circulars on Lending Policy
- The UK Money Markets Guide (was formerly known as the Non Investment Products Code (NIPS) - (formerly known as The London Code of Conduct) for principals and broking firms in the wholesale markets.
- Financial Conduct Authority's Code of Market Conduct
- The Council's Standing Orders relating to Contracts
- The Council's Financial Regulations
- The Council's Scheme of Delegated Functions

Treasury Management Practices

1.6.2. Procedures for Evidencing the Council's Powers/Authorities to Counterparties

The Council's powers to borrow and invest are contained in legislation.

Investing: Local Government Act 2003, section 12

Borrowing: Local Government Act 2003, section 1

Required Information on Counterparties

Lending shall only be made to counterparties on the Approved Lending list. This list has been compiled using advice from the Council's treasury advisers based upon credit ratings supplied by Fitch, Moodys and Standard & Poors.

1.6.3 Statement on the Council's Political Risks and Management of Same

The Deputy Chief Executive shall take appropriate action with the Council, the Chief Executive and the Leader of the Council to respond to and manage appropriately political risks such as change of majority group, leadership in the Council, change of Government etc.

1.6.4 Monitoring Officer

The monitoring officer is the Executive Director – Legal & Democratic Services; the duty of this officer is to ensure that the treasury management activities of the Council are lawful.

1.6.5. Chief Financial Officer

The Chief Financial Officer is the Deputy Chief Executive; the duty of this officer is to ensure that the financial affairs of the Council are conducted in a prudent manner and to make a report to the Council if he has concerns as to the financial prudence of its actions or its expected financial position.

1.7 Fraud, Error and Corruption, and Contingency Management

There is a risk that an organisation could fail to identify the circumstances in which it may be exposed to the risk of loss through fraud, error, corruption or other eventualities in its treasury management dealings, and fail to employ suitable systems and procedures and maintain effective contingency management arrangements to these ends. This is commonly referred to as operational risk.

The Council will ensure that it has identified the circumstances which may expose it to the risk of loss through fraud, error, corruption or other eventualities in its treasury management dealings. Accordingly, it will employ suitable systems and procedures, and will maintain effective contingency management arrangements, to these ends.

The Council will therefore:-

- a) Seek to ensure an adequate division of responsibilities and maintenance at all times of an adequate level of internal check which minimises such risks.
- b) Fully document all its treasury management activities so that there can be no possible confusion as to what proper procedures are.
- c) Staff will not be allowed to take up treasury management activities until they have had proper training in procedures and are then subject to an adequate and appropriate level of supervision.
- d) Records will be maintained of all treasury management transactions so that there is a full audit trail and evidence of the appropriate checks being carried out.

Treasury Management Practices

1.7.1. Details of Systems and Procedures to be Followed, Including Internet Services

Authority

- The Scheme of Delegation to Officers sets out the delegation of duties to officers.
- All loans and investments are negotiated by the responsible officer or authorised persons.
- Loan procedures are defined in the Council's Financial Regulations.

Procedures

- Electronic Banking procedures – A password and PIN number is required to access the Bankline system which is used to make electronic payments.
- CHAPS payments – Payments can only be authorised by agreed officers who have been notified to the current provider of our banking services.

Investment and borrowing transactions

- A detailed register of all loans and investments is maintained by the treasury team. This is regularly checked to the ledger.
- Adequate and effective cash flow forecasting records are maintained on spreadsheets to support the decision to lend or borrow.
- A written acknowledgement of each deal is sent promptly to the lending or borrowing institution.
- Written confirmation is received and checked against the dealer's records for the transaction.
- Any discrepancies are immediately reported to the Principal Accountant for resolution.
- All transactions placed through brokers are confirmed by a broker note showing details of the loan arranged. Written confirmation is received and checked against the dealer's records for the transaction. Any discrepancies are immediately reported to the Principal Accountant for resolution.

Regularity and security

- Lending is only made to institutions on the Approved List of Counterparties.
- All loans raised and repayments made go directly to and from the bank account of approved counterparties.
- Counterparty limits are set for every institution that the Council invests with.
- Brokers have a list of named officials authorised to agree deals..
- There is a separation of duties in the section between dealers and the checking and authorisation of all deals.
- The Council's bank holds a list of Council officials who are authorised signatories for treasury management transactions.
- Payments can only be authorised in a formal letter by an authorised signatory, the list of signatories having previously been agreed with the current provider of our banking services.
- There is adequate insurance cover for employees involved in loans management and accounting.

Checks

- The bank reconciliation is carried out monthly from the bank statement to the financial ledger.
- A debt charge/investment income listing is produced monthly when a review is undertaken against the budget for interest earnings and debt costs.

Treasury Management Practices

Calculations

- The calculation of repayment of principal and interest notified by the lender or borrower is checked for accuracy against the amount calculated by the Treasury Team.

1.7.2. Emergency and Contingency Planning Arrangements Disaster Recovery Plan.

Treasury Management related files (word and excel) are stored on the Council's 'H' Drive with arrangements for contingency/back-up. Backup facilities can be accessed off site.

In the event of a 'Bankline System' failure, manual procedures would be followed with information being provided from the Council's Bankers by telephone.

All members of the treasury management team are familiar with this plan and new members will be briefed on it.

1.7.3. Insurance Cover Details Fidelity Insurance

The Council has 'Fidelity' insurance cover with Zurich Municipal Insurance. This covers the loss of cash by fraud or dishonesty of employees.

This cover is limited to £2m for 13 designated officers, and for all other officers £140k, for any one event with an excess of £5,000 for any one event

Officials Indemnity Insurance

The Council also has an 'Officials Indemnity' insurance policy with Travellers which covers loss to the Council from the actions and advice of its officers in the course of their duty which are negligent and without due care. This cover is limited to £2m for any one event with an excess of £25,000 for any one event.

This insurance is currently up for tender and a new insurer may be in place from 1st April. The level of cover will not change.

Business Interruption

The Council also has a 'Business Interruption' cover as part of its property insurance with Zurich Municipal Insurance

1.8 Market Risk Management

The risk that, through adverse market fluctuations in the value of the principal sums an organisation borrows and invests, its stated treasury management policies and objectives are compromised, against which effects it has failed to protect itself adequately.

The Council will seek to ensure that its stated treasury management policies and objectives will not be compromised by adverse market fluctuations in the value of the principal sums it invests, and will accordingly seek to protect itself from the effects of such fluctuations.

1.8.1. Details of Approved Procedures and Limits for Controlling Exposure to Investments Whose Capital Value May Fluctuate (Gilts, CDs, Etc.)

These are controlled through setting limits on investment instruments where the principal value can fluctuate. The limits are determined and set through the Annual Investment Strategy.

Treasury Management Practices

TMP 1 SCHEDULE 1 – SPECIFIED AND NON SPECIFIED INVESTMENTS

The guidance and CIPFA TM Code distinguishes between specified and non-specified investments, as follows:-

- **Specified Investments:** All such investments will be sterling denominated with maturities up to a maximum of 1 year, meeting the minimum 'high' quality criteria where applicable.
- **Non-Specified Investments:** These are investments which do not meet the Specified Investment Criteria.

Organisation – Specified unless otherwise stated	Minimum credit criteria / colour band	Max Amount	Max Period
Term deposits with UK Clearing Banks	Blue Orange Red Green No Colour	£2m	Up to 1 year* Up to 1 year Up to 6 months Up to 100 days Not for use
Liquid deposits with Nat West Liquidity Account	Blue Orange Red Green No Colour	£3m	Up to 1 year* Up to 1 year Up to 6 months Up to 100 days Not for use
Term deposits with UK Building Societies	Blue Orange Red Green No Colour	£2m	Up to 1 year* Up to 1 year Up to 6 months Up to 100 days Not for use
UK Local Authorities	N/A	£2m	Up to 1 year
Money Market Funds	Minimum AAA	£2m	Up to 1 year

* Nationalised and part Nationalised banks

Treasury Management Practices

TMP 2 Performance Management

2.1 Evaluation and Review of Treasury Management Decisions

The Council has a number of approaches to evaluating treasury management decisions: -

- a. reviews with our treasury management consultants
- b. annual review after the end of the year as reported to full council
- c. half yearly reports to Cabinet

2.1.1 Reviews with our treasury management consultants

The treasury management team holds reviews with our consultants every 12 months to review the performance of the investment and debt portfolios.

2.1.2 Review reports on treasury management

An Annual Treasury Report is submitted to the Council each year after the close of the financial year which reviews the performance of the debt and investment portfolios. This report contains the following: -

- a. total debt and investments at the beginning and close of the financial year and average interest rates
- b. borrowing strategy for the year compared to actual strategy
- c. investment strategy for the year compared to actual strategy
- d. explanations for variance between original strategies and actual
- e. debt rescheduling done in the year
- f. actual borrowing and investment rates available through the year
- g. compliance with Prudential and Treasury Indicators
- h. other

2.1.3 Half Yearly Monitoring Reports

A half yearly Report on Treasury Management is submitted to Cabinet in October which reviews the performance of the debt and investment portfolios. This report contains the same information as the annual report but only includes information for the first 6 months

2.1.4 Comparative reviews

When data becomes available, comparative reviews are undertaken to see how the performance of the authority on debt and investments compares to other authorities with similar size portfolios (but allowing for the fact that Prudential and Treasury Indicators are locally set). Data used will be sourced from: -

- CIPFA Treasury Management statistics published each year for the last complete financial year
- CIPFA Benchmarking Club
- other

Treasury Management Practices

2.2 Benchmarks and Calculation Methodology:

2.2.1 Debt management

- Average rate on all external debt
- Average rate on external debt borrowed in previous financial year
- Average rate on internal borrowing
- Average period to maturity of external debt
- Average period to maturity of new loans in previous year

2.2.2 Investment.

The performance of investment earnings will be measured against the following benchmarks: -

- a. in house investments
- b. Link Asset Services model

Performance may also be measured against other local authority funds with similar benchmark and parameters managed by other fund managers.

2.3 Policy Concerning Methods for Testing Value for money in Treasury Management

2.3.1 Frequency and processes for tendering

Tenders are normally awarded on a 3 year basis. The process for advertising and awarding contracts will be in line with the Council's Contract Standing Orders.

2.3.2 Banking services

The Council's banking arrangements are to be subject to competitive tender unless it is considered that there will be changes in the volume of transactions in the foreseeable future which renders a shorter period appropriate.

2.3.3 Money-broking services

The Council may use money broking services in order to make deposits or to borrow, and will establish charges for all services prior to using them.

2.3.4 Consultants'/advisers' services

This Council's policy is to appoint full-time professional treasury management consultants (Link Asset Services) and separate leasing advisory consultants (Chrystal Consulting Ltd).

2.3.5 Policy on External Managers (Other than relating to Superannuation Funds)

The Council's policy is not to appoint external investment fund managers.

Treasury Management Practices

TMP 3 Decision-Making and Analysis

3.1 Funding, Borrowing, Lending, and New Instruments/Techniques:

3.1.1 Records to be kept

All loan transactions are recorded on a spreadsheet.

The following records will be used relative to each loan or investment.

- Daily cash balance forecasts
- Money market rates obtained by telephone and e-mail from brokers or direct
- Dealing slips for all money market transactions
- Brokers' confirmations for investment and temporary borrowing transactions
- Confirmations from borrowing /lending institutions where deals are done directly
- PWLB loan confirmations
- PWLB debt portfolio schedules.
- Certificates for market loans, local bonds and other loans

3.1.2 Processes to be pursued

- Cash flow analysis.
- Debt and investment maturity analysis
- Ledger reconciliation
- Review of opportunities for debt restructuring (if applicable)
- Review of borrowing requirement to finance capital expenditure (and other forms of financing where those offer value for money)
- Performance information (e.g. monitoring of actuals against budget for debt charges, interest earned, debt management; also monitoring of average pool rate, investment returns, etc).

3.1.3 Issues to be addressed.

3.1.3.1. In respect of every treasury management decision made the Council will:

- a) Above all be clear about the nature and extent of the risks to which the Council may become exposed
- b) Be certain about the legality of the decision reached and the nature of the transaction, and that all authorities to proceed have been obtained
- c) Be content that the documentation is adequate both to deliver the Council's objectives and protect the Council's interests, and to deliver good housekeeping
- d) Ensure that third parties are judged satisfactory in the context of the Council's creditworthiness policies, and that limits have not been exceeded
- e) Be content that the terms of any transactions have been fully checked against the market, and have been found to be competitive.

Treasury Management Practices

3.1.3.2 In respect of borrowing and other funding decisions, the Council will:

- a) consider the ongoing revenue liabilities created, and the implications for the organisation's future plans and budgets
- b) evaluate the economic and market factors that might influence the manner and timing of any decision to finance capital schemes
- c) consider the merits and demerits of alternative forms of funding, including funding from revenue, leasing and external grant providers
- d) consider the alternative interest rate bases available, the most appropriate periods to fund and repayment profiles to use.

3.1.3.3 In respect of investment decisions, the Council will:

- a) Consider the optimum period, in the light of cash flow availability and prevailing market conditions;
 - b) Consider the alternative investment products and techniques available, especially the implications of using any which may expose the Council to changes in the value of its capital.
-

Treasury Management Practices

TMP 4 Approved Instruments, Methods and Techniques

4.1 Approved Activities of the Treasury Management Operation

- borrowing;
- lending;
- debt repayment and rescheduling;
- consideration, approval and use of new financial instruments and treasury management techniques;
- managing the underlying risk associated with the Council's capital financing and surplus funds activities;
- managing cash flow;
- banking activities;
- leasing.

4.2 Approved Instruments for Investments

Refer to the Annual Investment Strategy (updated February 2019)

4.2.1 Implementation of MIFID II Requirements

Since 3 January 2018, UK public sector bodies have been defaulted to “retail” status under the requirements of MiFID II. However, for each counterparty it is looking to transact with, (e.g. financial institution, fund management operator, broker), there remains the option to opt up to “professional” status, subject to meeting certain requirements specified by MIFID II and that it has the appropriate level of knowledge and experience and decision making processes in place in order to use regulated investment products.

MIFID II does not cover term deposits so local authorities should not be required to opt up to professional status. However, some non-UK banks do not have the necessary regulatory permissions to deal with retail clients, so opting up to professional status would be required.

For investing in negotiable investment instruments, (e.g. certificates of deposit, gilts, corporate bonds), money market funds and other types of investment funds, which are covered by MIFID II, a schedule is maintained of all counterparties that the treasury management team are authorised to place investments with. This specifies for each investment instrument and for each counterparty, whether the authority has been opted up to professional status. (N.B. some money markets funds will deal with both retail and professional clients.)

A file is maintained for all permissions applied for and received for opt ups to professional status specifying name of the institution, instrument, date applied for and date received.

4.3 Approved Techniques

- Forward dealing
- LOBOs – lenders option, borrower's option borrowing instrument
- The use of structured products such as callable deposits

Treasury Management Practices

4.4 Approved Methods and Sources of Raising Capital Finance

Finance will only be raised in accordance with the Local Government Act 2003, and within this limit the Council has a number of approved methods and sources of raising capital finance. These are:

On Balance Sheet	Fixed	Variable
PWLB	●	●
Market (long-term)	●	●
Market (temporary)	●	●
Market (LOBOs)	●	●
Local temporary	●	●
Local Bonds	●	
Overdraft		●
Internal (capital receipts & revenue balances)	●	●
Leasing (not operating leases)	●	●
Deferred Purchase	●	●

Other Methods of Financing

Government and EC Capital Grants
 Lottery monies
 Operating leases

Borrowing will only be done in Sterling. All forms of funding will be considered dependent on the prevailing economic climate, regulations and local considerations. The Deputy Chief Executive has delegated powers in accordance with Financial Regulations, Standing Orders, the Scheme of Delegation to Officers Policy and the Treasury Management Strategy to take the most appropriate form of borrowing from the approved sources.

4.5 Investment Limits

The Annual Investment Strategy sets out the limits and the guidelines for use of each type of investment instrument.

4.6 Borrowing Limits

See the Treasury Management Strategy Statement and Prudential and Treasury Indicators.

Treasury Management Practices

TMP 5 Organisation, Clarity and Segregation of Responsibilities, and Dealing Arrangements

5.1 Allocation of responsibilities

(i) Full Council

- receiving and reviewing reports on treasury management policies, practices and activities
- approval of annual strategy.
- Approval of capital strategy

(ii) Full Council / Cabinet

- approval of amendments to the organisation's adopted clauses, treasury management policy statement and treasury management practices
- budget consideration and approval
- approval of the division of responsibilities
- receiving and reviewing regular monitoring reports and acting on recommendations
- approving the selection of external service providers and agreeing terms of appointment.

(iii) Resources Overview & Scrutiny Committee

- reviewing the treasury management policy and procedures and making recommendations to the responsible body.

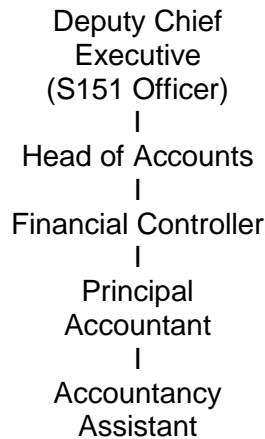
5.2 Principles and Practices Concerning Segregation of Duties

5.2.1 The following duties are undertaken by separate officers: -

Dealing	Negotiation and approval of deal. Receipt and checking of brokers confirmation note against loans diary. Reconciliation of cash control account. Bank reconciliation
Accounting Entry	Processing the expenditure or income i.e.posting the entries into the accounting system.
Authorisation/Payment of Deal	Entry onto system. Approval and payment. Approval of deals

Treasury Management Practices

5.3 Treasury Management Organisation Chart



5.4 Statement of the treasury management duties/responsibilities of each treasury post

5.4.1. The responsible officer

The responsible officer is the person charged with professional responsibility for the treasury management function and in this Council is the Deputy Chief Executive (*This post is also the S151 officer.*) This person will carry out the following duties: -

- a) Recommending clauses, treasury management policy/practices for approval, reviewing the same regularly, and monitoring compliance
- b) Submitting regular treasury management policy reports
- c) Submitting budgets and budget variations
- d) Receiving and reviewing management information reports
- e) Reviewing the performance of the treasury management function
- f) Ensuring the adequacy of treasury management resources and skills, and the effective division of responsibilities within the treasury management function
- g) Ensuring the adequacy of internal audit, and liaising with external audit
- h) Recommending the appointment of external service providers.
- i) The responsible officer has delegated powers through this policy to take the most appropriate form of borrowing from the approved sources, and to make the most appropriate form of investments in approved instruments.
- j) The responsible officer may delegate his power to borrow and invest to members of his staff. The Financial controller, the Principal Accountant or the Accountancy Assistant Treasury Management Team must conduct all dealing transactions, or staff authorised by the responsible officer to act as temporary cover for leave/sickness. All transactions must be authorised by at least two of the named officers above.
- k) The responsible officer will ensure that Treasury Management Policy is adhered to, and if not will bring the matter to the attention of elected members as soon as possible.
- l) Prior to entering into any capital financing, lending or investment transaction, it is the responsibility of the responsible officer to be satisfied, by reference to the Council's legal department and external advisors as appropriate, that the proposed transaction does not breach any statute, external regulation or the Council's Financial Regulations
- m) It is also the responsibility of the responsible officer to ensure that the Council complies with the requirements of The UK Money Markets Code (formerly known as the Non Investment Products Code) for principals and broking firms in the wholesale markets.

Treasury Management Practices

5.4.2. Financial Controller / Principal Accountant

The responsibilities of this post will be: -

- a) Execution of transactions
- b) Adherence to agreed policies and practices on a day-to-day basis
- c) Maintaining relationships with counterparties and external service providers
- d) Supervising treasury management staff
- e) Monitoring performance on a day-to-day basis
- f) Submitting management information reports to the responsible officer
- g) Identifying and recommending opportunities for improved practices

5.4.3. The Head of the Paid Service – the Chief Executive

The responsibilities of this post will be: -

- a) Ensuring that the system is specified and implemented
- b) Ensuring that the Deputy Chief Executive reports regularly to the full Council and Cabinet on treasury policy, activity and performance.

5.4.4. The Monitoring Officer – Executive Director – Legal & Democratic Services

The responsibilities of this post will be: -

- a) Ensuring compliance by the Deputy Chief Executive with the treasury management policy statement and treasury management practices and that they comply with the law.
- b) Being satisfied that any proposal to vary treasury policy or practice complies with law or any code of practice.
- c) Giving advice to the Deputy Chief Executive when advice is sought.

5.4.5. Internal Audit

The responsibilities of Internal Audit will be: -

- a) Reviewing compliance with approved policy and treasury management practices.
- b) Reviewing division of duties and operational practice.
- c) Assessing value for money from treasury activities.
- d) Undertaking probity audit of treasury function.

5.5 Absence Cover Arrangements

The Head of Accounts is also the deputy S151 Officer.

5.6 Dealing Limits

The following posts are authorised to deal: -

- Head of Accounts
- Financial Controller
- Principal Accountant

The dealing limits are set out in TMP 1.1.1

5.7 Direct Dealing Practices

The Council will consider dealing direct with counterparties if it is appropriate and the Council believes that better terms will be available. At present, most deals are arranged through brokers. There are certain types of accounts and facilities, however, where direct dealing is required, as follows;

- Business Reserve Accounts:
- Call Accounts:
- Money Market Funds.

Treasury Management Practices

5.8 Settlement Transmission Procedures

For payments a transfer will be made through the CHAP's system to be completed by the appropriate bank deadlines in place that day.

5.9 Documentation Requirements

For each deal undertaken a record should be prepared giving details of dealer, amount, period, counterparty, interest rate, dealing date, payment date(s), broker.

5.10 Arrangements Concerning the Management of Third-Party Funds.

The Council holds a number of trust funds. The cash in respect of these funds is held in the Council's bank account but transactions are separately coded. Interest is given on credit balances at the bank base rate for internal balances for the year.

Treasury Management Practices

TMP 6 Reporting Requirements and Management Information Arrangements

6.1 Annual programme of reporting

- a) Annual reporting requirements before the start of the year: -
 - a. review of the organisation's approved clauses, treasury management policy statement and practices
 - b. strategy report on proposed treasury management activities for the year comprising of the Treasury Management Strategy Statement, Annual Investment Strategy and Minimum Revenue Provision Policy Statement
 - c. Capital Strategy to cover the following:
 - I. Give a longer term view of the capital programme and treasury management implications thereof beyond the three year time horizon for detailed planning.
 - II. An overview of treasury and non-treasury investments to highlight the risks and returns involved in each and the balance (proportionality), between both types of investments.
 - III. The authorities risk appetite and specific policies and arrangements for non-treasury investments.
 - IV. Schedule of non-treasury investments
- b) Mid-year review
- c) Annual review report after the end of the year

6.2 Annual Treasury Management Strategy Statement

1. The Treasury Management Strategy Statement sets out the specific expected treasury activities for the forthcoming financial year. This strategy will be submitted to the Cabinet and then to the full Council for approval before the commencement of each financial year.
2. The formulation of the annual Treasury Management Strategy Statement involves determining the appropriate borrowing and investment decisions in the light of the anticipated movement in both fixed and shorter term variable interest rates. For instance, the Council may decide to postpone borrowing if fixed interest rates are expected to fall, or borrow early if fixed interest rates are expected to rise.
3. The Treasury Management Strategy Statement is concerned with the following elements:
 - a) Prudential and Treasury Indicators
 - b) current Treasury portfolio position
 - c) borrowing requirement
 - d) prospects for interest rates
 - e) borrowing strategy
 - f) policy on borrowing in advance of need
 - g) debt rescheduling
 - h) investment strategy
 - i) creditworthiness policy
 - j) policy on the use of external service providers
 - k) any extraordinary treasury issue
 - l) the MRP strategy

Treasury Management Practices

4. The Treasury Management Strategy Statement will establish the expected move in interest rates against alternatives (using all available information such as published interest rate forecasts where applicable), and highlight sensitivities to different scenarios.

6.3 The Annual Investment Strategy Statement

At the same time as the Council receives the Treasury Management Strategy Statement it will also receive a report on the Annual Investment Strategy which will set out the following: -

- a) The Council's risk appetite in respect of security, liquidity and optimum performance
- b) The definition of 'high credit quality' to determine what are specified investments as distinct from non specified investments
- c) Which specified and non specified instruments the Council will use
- d) Whether they will be used by the in house team, external managers or both (if applicable)
- e) The Council's policy on the use of credit ratings and other credit risk analysis techniques to determine creditworthy counterparties for its approved lending list
- f) Which credit rating agencies the Council will use
- g) How the Council will deal with changes in ratings, rating watches and rating outlooks
- h) Limits for individual counterparties and group limits
- i) Country limits
- j) Levels of cash balances
- k) Interest rate outlook
- l) Budget for investment earnings
- m) Policy on the use of external service providers

6.4 The Annual Minimum Revenue Provision Statement

This statement will set out how the Council will make revenue provision for repayment of its borrowing using the four options for so doing and will be submitted at the same time as the Annual Treasury Management Strategy Statement.

6.5 Policy on Prudential and Treasury Indicators

1. The Council approves before the beginning of each financial year a number of treasury limits which are set through Prudential and Treasury Indicators.
2. The responsible officer is responsible for incorporating these limits into the Annual Treasury Management Strategy Statement, and for ensuring compliance with the limits. Should it prove necessary to amend these limits, the responsible officer shall submit the changes for approval to Cabinet and then full Council.

6.6 Mid year review

The Council will review its treasury management activities and strategy on a six monthly basis. This review will consider the following: -

- a) activities undertaken
- b) variations (if any) from agreed policies/practices
- c) interim performance report
- d) regular monitoring
- e) monitoring of treasury management indicators for local authorities.

Treasury Management Practices

6.7 Annual Review Report on Treasury Management Activity

An annual report will be presented to the Cabinet and then to the full Council at the earliest practicable meeting after the end of the financial year, but in any case by the end of September. This report will include the following: -

- a) transactions executed and their revenue (current) effects
- b) report on risk implications of decisions taken and transactions executed
- c) compliance report on agreed policies and practices, and on statutory/regulatory requirements
- d) performance report
- e) report on compliance with CIPFA Code recommendations
- f) monitoring of treasury management indicators

6.8 Management Information Reports

Management information reports will be prepared every month by the Principal Accountant and will be presented to the Financial Controller.

These reports will contain the following information: -

- a) a summary of transactions executed and their revenue effect; and
- b) the effect on loan charges/investment income; and
- c) any non compliance with Prudential limits or other treasury management limits.

6.9 Publication of Treasury Management Reports

Reports presented to Council and Cabinet are available to view on the Council's website www.hyndburnbc.gov.uk.

Treasury Management Practices

TMP 7 Budgeting, Accounting and Audit Arrangements

7.1 Statutory/Regulatory Requirements

The accounts are drawn up in accordance with the Code of Practice on Local Authority Accounting in Great Britain that is recognised by statute as representing proper accounting practices.

The Council has also adopted in full the principles set out in CIPFA's 'Treasury Management in the Public Services - Code of Practice' (the 'CIPFA Code'), together with those of its specific recommendations that are relevant to this Council's treasury management activities.

7.2 Sample Budgets / Accounts / Prudential and Treasury Indicators

The Deputy Chief Executive will prepare a three year medium term financial plan with Prudential and Treasury Indicators for treasury management which will incorporate the budget for the forthcoming year and provisional estimates for the following two years. This will bring together all the costs involved in running the function, together with associated income. The Deputy Chief Executive will exercise effective controls over this budget and monitoring of performance against Prudential and Treasury Indicators, and will report upon and recommend any changes required in accordance with TMP6.

7.3 List of Information Requirements of External Auditors.

- Reconciliation of loans outstanding in the financial ledger to Treasury Management records
- Maturity analysis of loans outstanding
- Certificates for new long term loans taken out in the year
- Reconciliation of loan interest, discounts received and premiums paid to financial ledger by loan type
- Calculation of loans fund interest and debt management expenses
- Details of interest rates applied to internal investments
- Calculation of interest on working balances
- Interest accrual calculation
- Analysis of any deferred charges
- Calculation of loans fund creditors and debtors
- Annual Treasury Report
- Treasury Management Strategy Statement and Prudential and Treasury Indicators
- Review of observance of limits set by Prudential and Treasury Indicators
- Calculation of the Minimum Revenue Provision

7.4 Monthly Budget Monitoring Report

Monthly Budget Monitoring reports are produced for the Deputy Chief Executive, whilst a six monthly budget monitoring report goes to Cabinet. The report is intended to highlight any variances between budgets and spend in order that the Council can assess its financial position. Details of treasury management activities are included within this report.

Treasury Management Practices

TMP 8 Cash and Cash Flow Management

8.1 Arrangements for Preparing/Submitting Cash Flow Statements

Cash flow projections are prepared annually, monthly and daily. The annual and monthly cash flow projections are prepared from the previous years' cash flow records, adjusted for known changes in levels of income and expenditure and also changes in payments and receipts dates. These details are supplemented on an ongoing basis by information received of new or revised amounts to be paid or received as and when they are known.

8.2 Bank Statements Procedures

The Council receives daily bank statements and a monthly download of data from its bank. All amounts on the statement are checked to source data from Payroll, Creditors etc. A formal bank reconciliation is undertaken on a monthly basis by the Finance Department.

8.3 Payment Scheduling and Agreed Terms of Trade With Creditors

Our policy is to pay creditors (including sub-contractors) as per the agreed terms of trading.

8.4 Arrangements for Monitoring Debtors / Creditors Levels

The Administration Services Manager is responsible for monitoring the levels of debtors and creditors.

8.5 Procedures for Banking of Funds

All money received by an officer on behalf of the Council will without unreasonable delay be passed to the collection office to deposit in the Council's bank accounts. Cash and cheques banked the previous day will be taken into account in the daily cash flow.

8.6 Practices Concerning Prepayments to Obtain Benefits

The Council has no formal arrangement in place. Where such opportunities arise, the prepayment would be sought and authorised by the responsible officer.

Treasury Management Practices

TMP 9 Money Laundering

9.1 Proceeds of Crime Act 2002

Money laundering has the objective of concealing the origin of money generated through criminal activity. Legislation has given a higher profile to the need to report suspicions of money laundering. The Proceeds of Crime Act (POCA) 2002 established the main offences relating to money laundering. In summary, these are:

- concealing, disguising, converting, transferring or removing criminal property from England and Wales, from Scotland or from Northern Ireland
- being concerned in an arrangement which a person knows or suspects facilitates the acquisition, retention, use or control of criminal property
- acquiring, using or possessing criminal property.

These apply to all persons in the UK in a personal and professional capacity. Any person involved in any known or suspected money-laundering activity in the UK risks a criminal conviction. Other offences under the POCA include:

- failure to disclose money-laundering offences
- tipping off a suspect, either directly or indirectly
- doing something that might prejudice an investigation – for example, falsifying a document.

9.2 The Terrorism Act 2000

This act made it an offence of money laundering to become concerned in an arrangement relating to the retention or control of property likely to be used for the purposes of terrorism, or resulting from acts of terrorism. All individuals and businesses in the UK have an obligation to report knowledge, reasonable grounds for belief or suspicion about the proceeds from, or finance likely to be used for, terrorism or its laundering, where it relates to information that comes to them in the course of their business or employment

9.3 The Money Laundering Regulations 2012, 2015 and 2017

Organisations pursuing relevant business (especially those in the financial services industry regulated by the FCA) are required to do the following:

- identify and assess the risks of money laundering and terrorist financing
- have policies, controls and procedures to mitigate and manage effectively the risks of money laundering and terrorist financing identified through the risk assessments
- appoint a nominated officer
- implement internal reporting procedures
- train relevant staff in the subject
- obtain, verify and maintain evidence and records of the identity of new clients and transactions undertaken
- report their suspicions

Treasury Management Practices

9.4 Local authorities

Public service organisations and their staff are subject to the full provisions of the Terrorism Act 2000 and subsequent Terrorism Acts and may commit most of the principal offences under the POCA, but are not legally obliged to apply the provisions of the Money Laundering Regulations 2002, 2015 and 2017. However, as responsible public bodies, they should employ policies and procedures which reflect the essence of the UK's anti-terrorist financing, and anti-money laundering, regimes. Accordingly this Council will do the following: -

- a) evaluate the prospect of laundered monies being handled by them
- b) determine the appropriate safeguards to be put in place
- c) require every person engaged in treasury management to make themselves aware of their personal and legal responsibilities for money laundering awareness
- d) make all its staff aware of their responsibilities under POCA
- e) appoint a member of staff to whom they can report any suspicions. This person is Head of Accounts.
- f) in order to ensure compliance is appropriately managed, this Council will require senior management to give appropriate oversight, analysis and assessment of the risks of clients and work/product types, systems for monitoring compliance with procedures and methods of communicating procedures and other information to personnel.
- g) The officer responsible for the creation and monitoring the implementation of a corporate anti money laundering policy and procedures is Executive Director – Legal & Democratic Services and it shall be a requirement that all services and departments implement this corporate policy and procedures.

9.5 Procedures for Establishing Identity / Authenticity Of Lenders

It is not a requirement under POCA for local authorities to require identification from every person or organisation it deals with. However, in respect of treasury management transactions, there is a need for due diligence and this will be effected by following the procedures below.

The Council does not accept loans from individuals.

All loans are obtained from the PWLB, other local authorities or from authorised institutions under the Financial Services and Markets Act 2000. This register can be accessed through the FCA website on www.fca.gov.uk.

When repaying loans, the procedures in 9.6 will be followed to check the bank details of the recipient.

9.6 Methodologies for Identifying Deposit Takers

In the course of its Treasury activities, the Council will only lend money to or invest with those counterparties that are on its approved lending list. These will be local authorities, the PWLB, Bank of England and authorised deposit takers under the Financial Services and Markets Act 2000. The FCA register can be accessed through their website on www.fca.gov.uk.

All transactions will normally be carried out by CHAP's for making deposits or repaying loans.

Treasury Management Practices

TMP 10 Training and Qualifications

The Council recognises that relevant individuals will need appropriate levels of training in treasury management due to its increasing complexity. There are two categories of relevant individuals: -

- a) Treasury management staff employed by the Council
- b) Members charged with governance of the treasury management function

All treasury management staff should receive appropriate training relevant to the requirements of their duties at the appropriate time. The Council operates a Personal Development Review system which identifies the training requirements of individual members of staff engaged on treasury related activities.

Additionally, training may also be provided on the job and it will be the responsibility of the Deputy Chief Executive to ensure that all staff under his authority receives the level of training appropriate to their duties. This will also apply to those staff who from time to time cover for absences from the treasury management team.

10.1 Details of Approved Training Courses

Treasury management staff and members attend courses provided by our treasury management consultants, CIPFA, money brokers etc.

10.2 Records of Training Received by Treasury Staff

The relevant line manager will update the relevant officers Personal Development Review with details of training received. This will be passed the Human Resources Department who will maintain records on all staff and the training they receive.

10.3 Record of Secondment of Senior Management

Records will be kept of senior management who are seconded into the treasury management section in order to gain first hand experience of treasury management operations.

10.4 Statement of Professional Practice (SOPP)

1. Where the Chief Financial Officer is a member of CIPFA, there is a professional need for the CFO to be seen to be committed to professional responsibilities through both personal compliance and by ensuring that relevant staff are appropriately trained.
2. Other staff involved in treasury management activities who are members of CIPFA must also comply with the SOPP.

10.6 Member training records

Records will be kept of all training in treasury management provided to members.

10.7 Members charged with governance

Members charged with diligence also have a personal responsibility to ensure that they have the appropriate skills and training for their role.

Treasury Management Practices

MP 11 Use of External Service Providers

11.1 Details of Contracts with Service Providers, Including Bankers, Brokers, Consultants, Advisers

This Council will employ the services of other organisations to assist it in the field of treasury management. In particular, it will use external consultants to provide specialist advice in this ever more complex area. However, it will ensure that it fully understands what services are being provided and that they meet the needs of this organisation, especially in terms of being objective and free from conflicts of interest.

It will also ensure that the skills of the in house treasury management team are maintained to a high enough level whereby they can provide appropriate challenge to external advice and can avoid undue reliance on such advice.

Treasury management staff and their senior management will therefore be required to allocate appropriate levels of time to using the following sources of information so that they are able to develop suitable levels of understanding to carry out their duties, especially in challenge and avoiding undue reliance.

- The quality financial press
- Market data
- Information on government support for banks and
- The credit ratings of that government support

11.1.1 Banking Services

- a) Name of supplier of service is the National Westminster Bank.
- b) Regulatory status – banking institution authorised to undertake banking activities by the FSA
- c) The branch address is:
PO Box No.2
St James Street
Accrington
Lancashire
BB5 1NB
Tel :- 0845 366 0613
- d) Contract commenced 13/6/1975 and is reviewed annually.
- e) Cost of service is variable depending on schedule of tariffs and volumes
- f) Payments monthly and quarterly

11.1.2 Money-Broking Services

The Council may use money brokers for temporary borrowing and investment and long term borrowing. It will seek to give an even spread of business amongst the approved brokers.

Name of supplier of service:

- a) RP Martin Brokers (UK) Ltd
Level 3
1 Snowdon Street
London
EC2A 2DQ
Tel: 020 7894 8698
Regulatory Status: FCA registered counterparty 187916

Treasury Management Practices

- b) Tullet Prebon Europe Ltd
 155 Bishopsgate
 2nd Floor
 London
 EC2M 3TQ
 Tel: 020 7200 7042
 Regulatory Status: FCA Authorised 146880

When undertaking temporary borrowing. The brokers currently charge commission at 0.1% of the amount borrowed for the duration of the loan. There is no commission charge for undertaking investment transactions.

11.1.3 Consultants'/Advisers' Services

Treasury Consultancy Services

The Council will seek to take expert advice on interest rate forecasts, annual treasury management strategy, timing for borrowing and lending, debt rescheduling, use of various borrowing and investment instruments, how to select credit worthy counterparties to put on its approved lending list etc.

The performance of consultants will be reviewed by the Deputy Chief Executive annually to check whether performance has met expectations.

- a) Name of supplier of service is Link Asset Services Limited. Their address is 6th Floor, 65 Gresham Street, London, EC2V 7NQ Tel: 0207 954 9618
 b) Regulatory status: Investment Adviser authorised by the FCA
 c) Contract commenced 2003 and is re-negotiated annually.
 d) Cost of service is currently £8,500 per year.
 e) Payments due annually

Leasing Consultancy Services

- a) The name of the supplier is Chrystal Consulting Ltd.
 b) Their address is 500 Styal Road, Manchester, M22 5HQ.
 c) Tel: 0161 493 9770
 d) Fee is agreed at 0.5% of the capital cost of drawdown and at 25% of any savings negotiated on secondary lease rentals.

Other Consultancy services may be employed on short term contracts as and when required.

11.1.4 Credit Rating Agency

The Council receives a credit rating service through its treasury management consultants, the costs of which is included in the consultant's annual fee.

11.2 Procedures & Frequency for Tendering Services

The procedure for awarding contracts will be as per the Councils contract procedure rules.

Treasury Management Practices

TMP 12 Corporate Governance

12.1 List of Documents to be Made Available for Public Inspection

- a. The Council is committed to the principle of openness and transparency in its treasury management function and in all of its functions.
- b. It has adopted the CIPFA Code of Practice on Treasury Management and implemented key recommendations on developing Treasury Management Practices, formulating a Treasury Management Policy Statement and implementing the other principles of the Code.
- c. The following documents are available for public inspection: -

- Treasury Management Policy Statement
- Treasury Management Strategy Statement
- Annual Investment Strategy
- Minimum Revenue Provision policy statement
- Annual Statement of Accounts
- Annual revenue budget and capital programme
- Year Capital Plan
- Capital Strategy
- Medium Term Financial Plan

Minutes of Council / Cabinet / committee meetings