

Hyndburn District

Year end summary

Produced by Hannah Cartmell, Lancashire Partnership Analyst Team, 6th March 2018.

PERFORMANCE

Table one below shows Police performance data for the Hyndburn CSP between 01/04/17 and 28/02/18. All crime has increased by 15.2% (899).

Table 1. Police Performance Data

CORR (V17) - Recorded Crime in Single Area - Period Comparisons								
Select Area	Hyndburn CSP							
AREA	LATER PERIOD			EARLIER PERIOD			DIFFERENCE	
	Apr-17	to	Feb-18	Apr-16	to	Feb-17	Num	%
PRIORITY CRIMES								
High Impact Acquisitive Crime	568			373			+ 195	+ 52.3%
Burglary (Dwelling)	0			349			- 349	- 100.0%
Burglary (Residential)	537			0			+ 537	No Calc
Robbery (Personal)	31			24			+ 7	+ 29.2%
All Domestic Assaults	452			333			+ 119	+ 35.7%
Serious Assault (Domestic)	11			5			+ 6	+ 120.0%
Less Serious Assault (Domestic)	224			182			+ 42	+ 23.1%
Non-Injury Assault (Domestic)	217			146			+ 71	+ 48.6%
All Non-Domestic Assaults	1,067			955			+ 112	+ 11.7%
Serious Assault (Non-Domestic)	36			37			- 1	- 2.7%
Less Serious Assault (Non-Domestic)	617			578			+ 39	+ 6.7%
Non-Injury Assault (Non-Domestic)	414			340			+ 74	+ 21.8%
Harassment & Stalking (Domestic)	115			89			+ 26	+ 29.2%
Sexual Offences on Children Under 16	120			75			+ 45	+ 60.0%
OTHER CRIMES								
All Crime	6,827			5,928			+ 899	+ 15.2%
Victim-Based Crime	6,312			5,581			+ 731	+ 13.1%
Violence Against the Person	2,071			1,598			+ 473	+ 29.6%
Homicide (ONS Definition)	1			3			- 2	- 66.7%
Violence WITH Injury (ONS Definition)	890			799			+ 91	+ 11.4%
Violence WITHOUT Injury (ONS Definition)	691			535			+ 156	+ 29.2%
Stalking and Harassment	488			261			+ 227	+ 87.0%
Death or Serious Injury – Unlawful Driving	1			0			+ 1	No Calc
Homicide (Local Definition)	2			3			- 1	- 33.3%
Acts Endangering Life	45			39			+ 6	+ 15.4%
Assault - Less Serious Injury	841			760			+ 81	+ 10.7%
Non-Injury Assault	631			486			+ 145	+ 29.8%
Assault Police	13			13			=	=
Harassment	332			261			+ 71	+ 27.2%
Stalking	1			0			+ 1	No Calc
Malicious Communications	155			0			+ 155	No Calc
Other Violence against the Person	51			36			+ 15	+ 41.7%

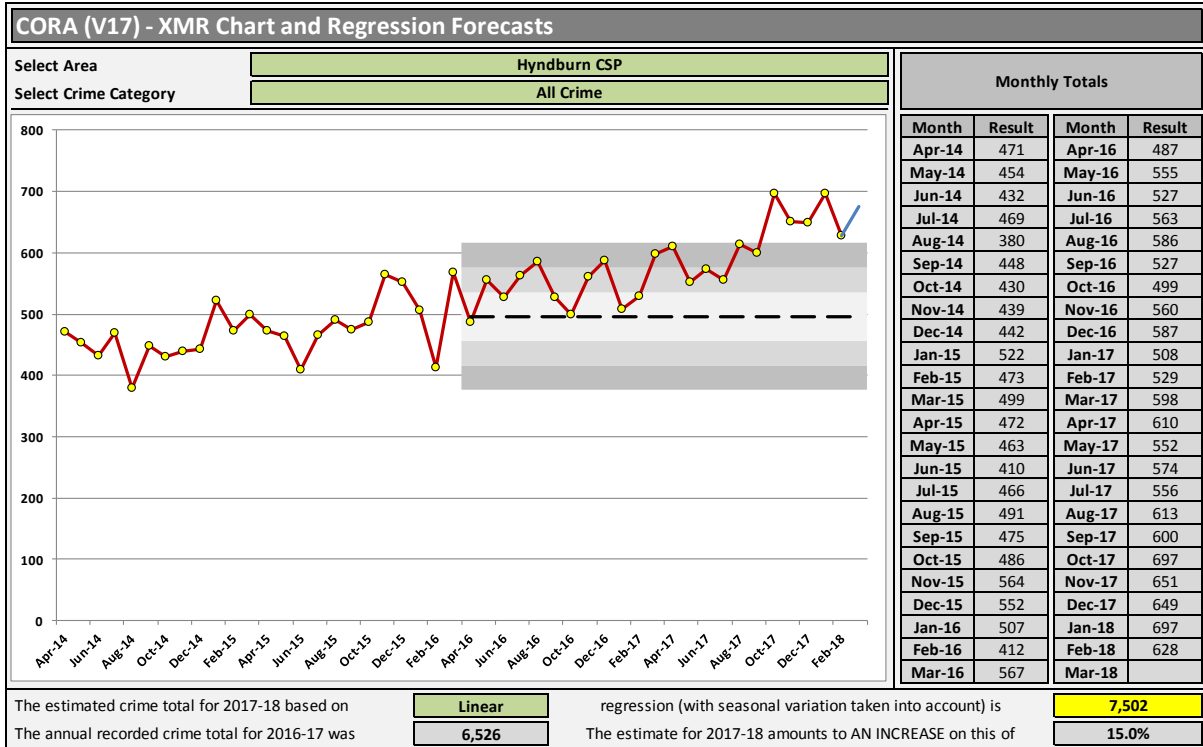
RESTRICTED

All Sexual Offences	212	153	+ 59	+ 38.6%
Rape	53	62	- 9	- 14.5%
Sexual Offences (excl Rape)	159	91	+ 68	+ 74.7%
Sexual Assault	86	46	+ 40	+ 87.0%
Sexual Offences on Children Under 16	120	75	+ 45	+ 60.0%
All Robbery	38	27	+ 11	+ 40.7%
Robbery (Business)	7	3	+ 4	+ 133.3%
Robbery (Personal)	31	24	+ 7	+ 29.2%
All Theft Offences	2,816	2,753	+ 63	+ 2.3%
All Burglary	720	699	+ 21	+ 3.0%
Burglary (Dwelling)	0	349	- 349	- 100.0%
Burglary (Other)	0	350	- 350	- 100.0%
Burglary (Residential)	537	0	+ 537	No Calc
Burglary (Business & Community)	183	0	+ 183	No Calc
Vehicle Offences	611	686	- 75	- 10.9%
Theft from a Motor Vehicle	319	429	- 110	- 25.6%
Vehicle Taking	208	175	+ 33	+ 18.9%
Vehicle Interference	83	82	+ 1	+ 1.2%
Theft from the Person	78	50	+ 28	+ 56.0%
Bicycle Theft	31	34	- 3	- 8.8%
Shoplifting	543	472	+ 71	+ 15.0%
Other Theft Offences (ONS)	833	812	+ 21	+ 2.6%
Theft in a Dwelling	109	134	- 25	- 18.7%
Other Thefts (HOC 0490 Only)	611	588	+ 23	+ 3.9%
Making Off Without Payment	78	44	+ 34	+ 77.3%
Miscellaneous Low Volume Thefts	35	46	- 11	- 23.9%
Criminal Damage & Arson Offences	1,175	1,050	+ 125	+ 11.9%
Arson	56	52	+ 4	+ 7.7%
Damage to Dwellings	369	313	+ 56	+ 17.9%
Damage to Other Buildings	115	111	+ 4	+ 3.6%
Damage to Vehicles	395	415	- 20	- 4.8%
Other Criminal Damage	238	155	+ 83	+ 53.5%
Racial/Religious Damage	2	4	- 2	- 50.0%
Other Crimes Against Society	515	347	+ 168	+ 48.4%
Possession of Weapons Offences	13	19	- 6	- 31.6%
Public Fear, Alarm or Distress	240	112	+ 128	+ 114.3%
Public Order Offences	314	163	+ 151	+ 92.6%
Drugs Offences	99	92	+ 7	+ 7.6%
Drugs - Trafficking	45	56	- 11	- 19.6%
Drugs - Possession	54	36	+ 18	+ 50.0%
Miscellaneous Crimes Against Society	89	73	+ 16	+ 21.9%
Domestic Abuse	767	538	+ 229	+ 42.6%
Hate Crime	94	54	+ 40	+ 74.1%
Aggravated Crime	40	26	+ 14	+ 53.8%
Alcohol Related Crime	942	833	+ 109	+ 13.1%
Alcohol Related Violence	511	463	+ 48	+ 10.4%
Business Crime	628	519	+ 109	+ 21.0%

The below XMR chart, (chart 1) shows all crime figures in Hyndburn since April 2014. The chart shows an increasing trend.

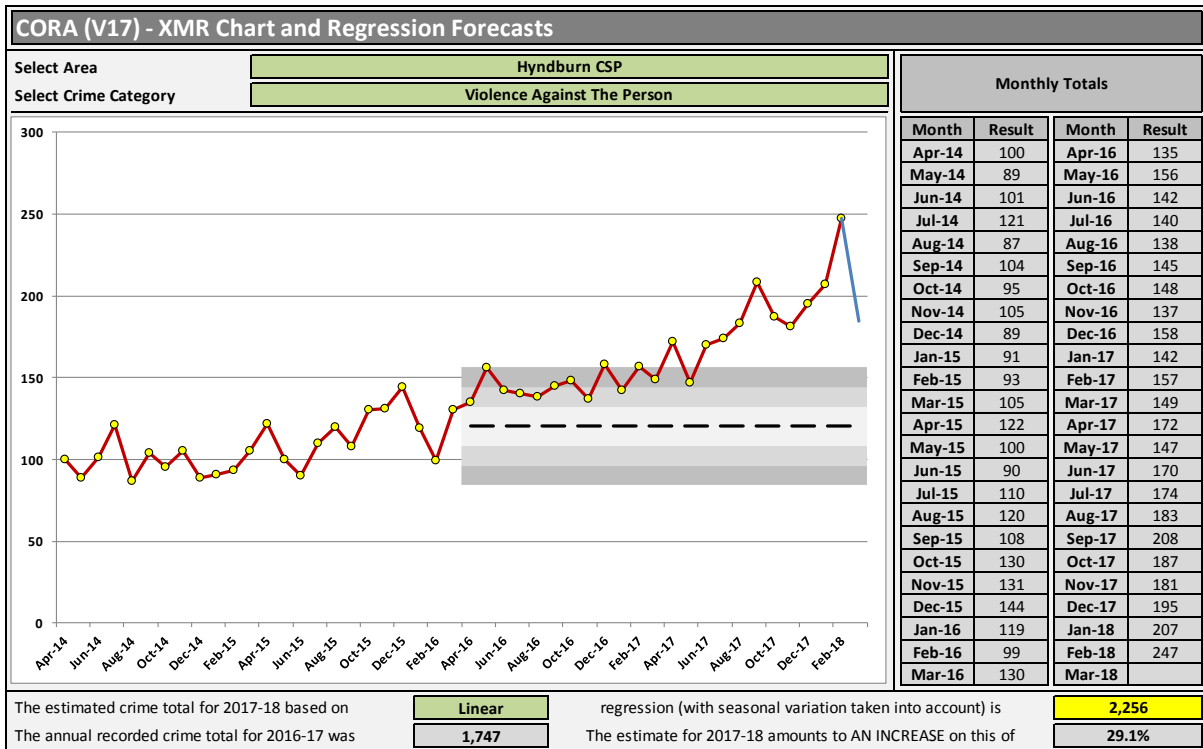
Chart 1.

XMR chart - all crime.



- In relation to all crime, assault with injury was the most commonly recorded crime classification, followed by other theft offences.
- The highest number of offences occurred in the Barnfield ward. There were slightly more offences in Accrington town centre than in the residential area of the ward.

VIOLENT CRIME

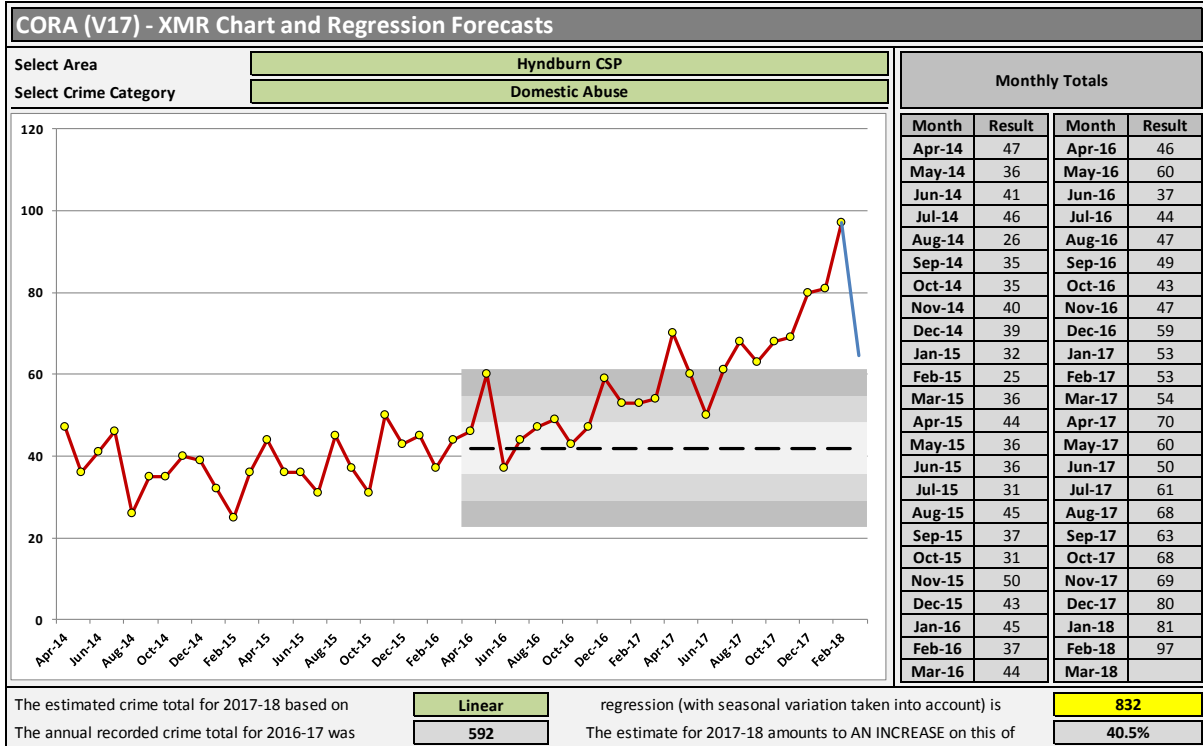


- Violence against the person has increased by 29.9% (473). The biggest increase was in the violence without injury category.
- The highest number of offences were in the Barnfield ward and these were equally split between Accrington town Centre and the residential area of the ward.
- Alcohol was a factor in 20% (346) of all violence against the person.

DOMESTIC ABUSE

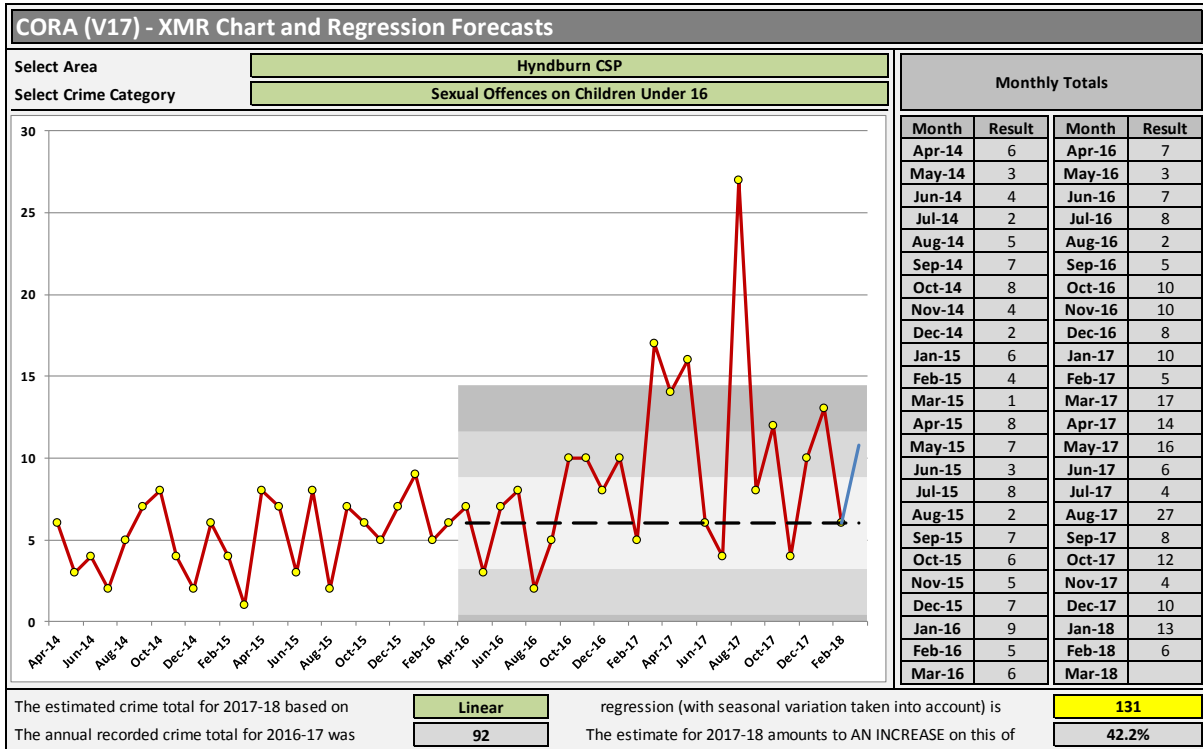
Chart three below, shows an XMR chart of domestic abuse figures in Hyndburn. The year end estimate for 2017/18 amounts to an increase of 40.5% (832)

Chart 3. XMR chart – Domestic Abuse



- Domestic assaults increased by 35.7% (119). The biggest increase was the non-injury assault category.
- Domestic abuse offences increased by 42.6% (229).
- The Spring Hill ward had the heist number of domestic abuse offences (78) followed by the Barnfield ward (58).
- Alcohol was a factor in 27.6% (159) of all domestic abuse offences.

SEXUAL ASSAULT U16

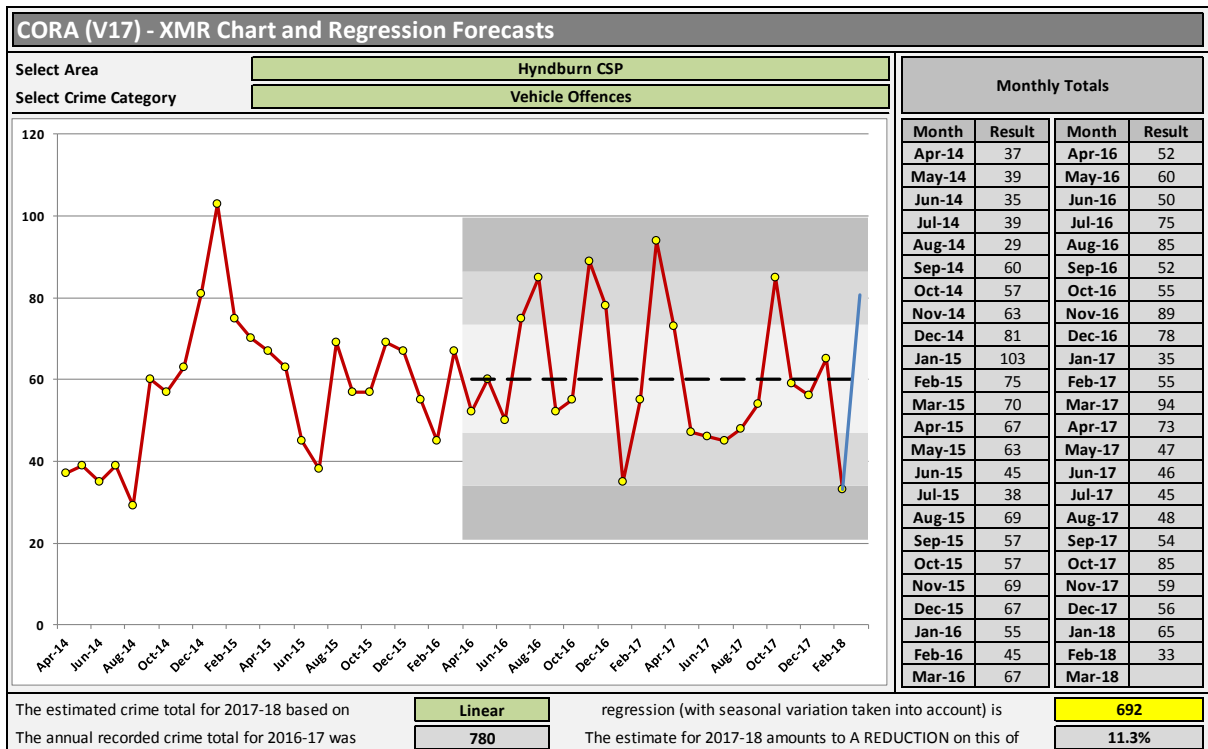


- Sexual assault on children under 16 increased by 60% (45).
- The estimate for 2017/18 amounts to an increase of 42%.
- The highest number of offences occurred in the Baxenden ward. Many of these were historical and occurred at a primary school. An offender has been charged and is awaiting sentence.

AUTO CRIME

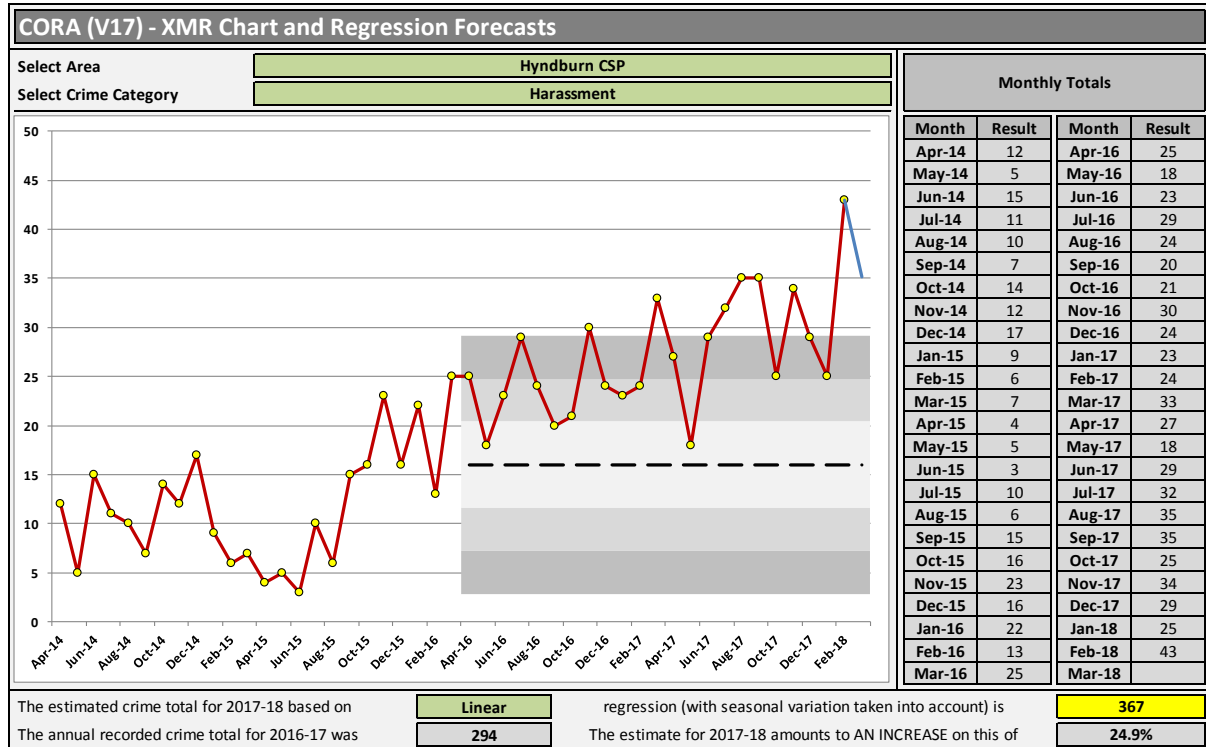
There has been a reduction of -10.9% (-75) in all vehicle crime offences.

- Theft from a vehicle decreased by -25.6% (-110).
- Vehicle interference increased by 1.2% (1).
- Vehicle taking increased by 18.9% (33).
- In relation to vehicle taking, the highest number of offences occurred in the Spring Hill ward (12), followed by the Netherton ward (10) and the St Oswalds ward (10).



HARASSMENT

Harassment has increased by 27.2% (71).



- There have been exceptionally high numbers of harassment offences since March.
- The highest number of offences were in the Spring Hill ward (38), followed by the Rishton ward (31).
- 37% (108) of harassment offences were domestic related.

ALCOHOL RELATED CRIME

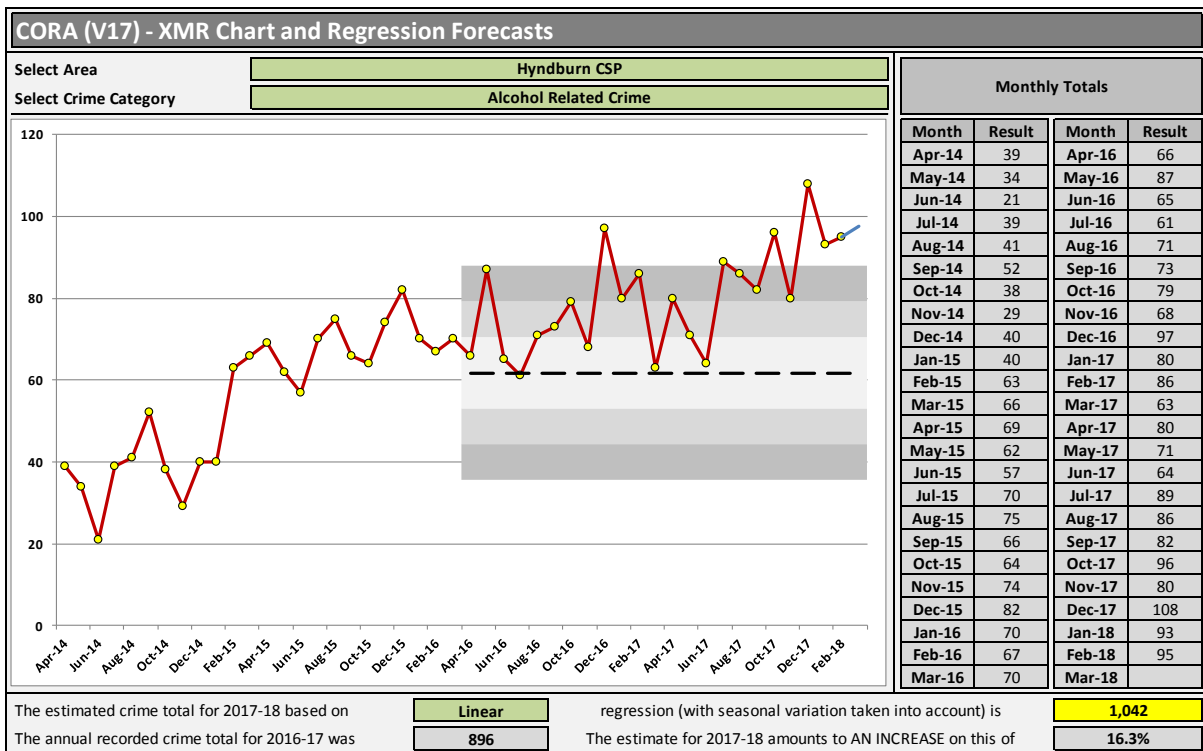
Alcohol related crime has increased by 13.3% (111). Alcohol related violence crime has increased by 10.8% (50).

Ten percent of all crime in Hyndburn was alcohol related.

December saw the highest level of alcohol related crime since April 2014.

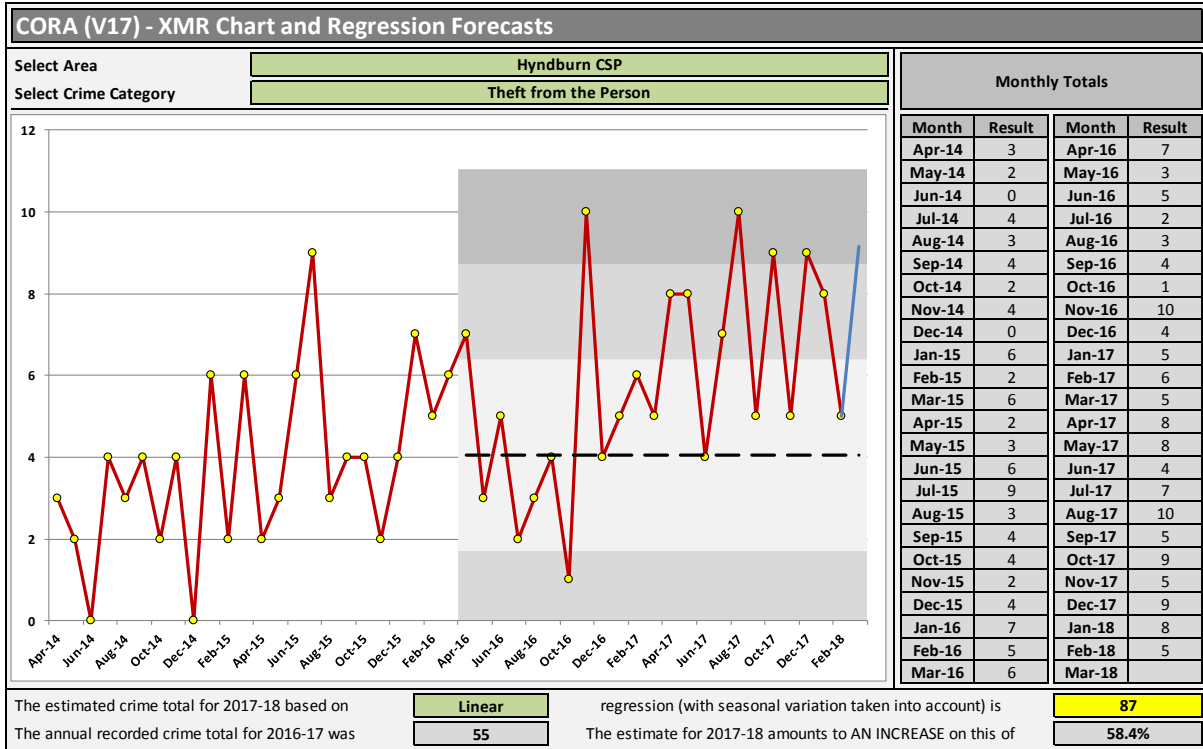
The highest number of alcohol related offences occurred in Accrington town centre. This is followed by the central ward.

Assault with injury was the most reported alcohol related crime.



THEFT FROM THE PERSON

- Theft from the person increased by 56% (28).
- The most offences occurred in Accrington town centre.



ANTI SOCIAL BEHAVIOUR

Anti-Social Behaviour File - Recorded by Class - Monthly					Updated To	
SELECT AREA: Hyndburn CSP					05-Mar-18	
Click on the drop-down arrows on the right-hand edges of the combo boxes and choose from the lists that appear.		LATER PERIOD		EARLIER PERIOD		CHANGE LATER v EARLIER
		FROM	TO	FROM	TO	
		Apr-17	Feb-18	Apr-16	Feb-17	
AREA	INCIDENTS	% TOTAL	INCIDENTS	% TOTAL	NUM DIFF	% CHANGE
Hyndburn CSP						
All Anti-Social Behaviour	4,510	100.0%	4,732	100.0%	- 222	- 4.7%
ASB - Personal	1,691	37.5%	1,771	37.4%	- 80	- 4.5%
ASB - Nuisance	2,657	58.9%	2,759	58.3%	- 102	- 3.7%
ASB - Environmental	162	3.6%	202	4.3%	- 40	- 19.8%
ASB - Historic/Incorrectly Classified	0	0.0%	0	0.0%	No Change	No Calc

All anti-social behaviour has decreased by -4.7% (-222). All ASB classifications have seen a reduction.

- Personal ASB decreased by -4.5% (-80).
- Nuisance ASB decreased by -3.7% (-102).
- Environmental ASB decreased by -19.8% (-40).

The highest number of ASB incidents occurred in the Barnfield ward, 61% (365) of these incidents that occurred in Accrington town centre. The next highest number of incidents occurred in the Central ward.

There were slightly higher numbers of incidents on Saturday and Sunday.

ASB was more prevalent between the hours of 1500 hours and 2000 hours.

Alcohol was a factor in 5% of ASB.

Almost thirty percent of all anti-social behaviour was youth related. Saturday and Sunday were also peak days for youth related ASB.

McDonalds on Hyndburn Road was a repeat location for anti-social behaviour (46). There were slightly higher numbers of incidents over the weekend period. Almost three quarters of ASB at McDonalds was youth related.

ROAD SAFETY

There has been an increase in the number of killed and seriously injured road traffic collisions. In Hyndburn, these have increased by 39.1% (9).

Casualties By Area (Later Period)	April 2017 - January 2018				Casualties By Area (Earlier Period)	April 2016 - January 2017				KSI Change	KSI % Change
	KSI	Fatal Injury	Serious Injury	Slight Injury		KSI	Fatal Injury	Serious Injury	Slight Injury		
EAST Division	224	15	209	1,014	EAST Division	228	11	217	1,168	- 4	- 1.8%
Hyndburn CSP	32	1	31	141	Hyndburn CSP	23	0	23	156	+ 9	+ 39.1%

The following table provides a performance overview for the key crime categories in Hyndburn.

Category	YTD Performance 2017-18			Performance Description (Hyndburn)
	Lancashire	East Lancs	Hyndburn	
Hyndburn Strategic Issues				
All Crime	18%	+15%	+15.1% (+895)	All crime continues to increase, there have been exceptionally high numbers in Hyndburn since April. October and January had the highest number of offences.
Domestic Abuse	DA+32.9% DV +28%	DA +42.6% DV +36%	DA +42.6%(+229) DV +35.4% (+118)	Strong increasing trend evident over the last 18 months. There have been exceptionally high numbers of domestic abuse offences year to date. The highest number of offences occurred in February. February also saw the highest number of domestic assaults.
All violence against the person	+33.3%	+33.4%	+29.5% (+471)	Violence against the person continues with a strong increasing trend. The highest number of offences were in February.
Sexual Assaults	+19.9%	+19.3%	+38.6% (59)	YTD sexual offences have increased. This is largely down to a number of offences being recorded in August as a result of historical sexual offences.
Alcohol Related Crime	+17.4%	+15.4%	+13.7% (+114)	There have been exceptionally high numbers of alcohol related crime year to date. The highest number of offences occurred in December. Alcohol related violence also increased by 11% (514).
High Impact Acquisitive Crime**	+54.1%	+33.2%	+52.3% (+195)	There have been exceptionally high numbers of HIAC since April. The highest number of offences occurred in November. The lowest number of offences occurred in February.
All Vehicle Crime	-0.1%	--6.4%	-10.9% (-75)	Year to date, all vehicle crime has decreased. Theft from a motor vehicle decreased by 25%. Vehicle interference increased by 1.2% (one offence) and vehicle taking increased by 18.9% (33).
Anti-Social Behaviour	-5%	-7.1%	-4.7%	There has been a decrease in ASB in Hyndburn, across East and pan Lancashire. Personal, nuisance and environmental ASB have all decreased.
KSIs (Apr-Feb)	-14.3%	-1.8%	+39.1%	There has been an increase of nine KSI collisions. There has been an increase of one fatal RTC.
Other Crime Categories				
Harassment	+15.9%	+31.8%	+26.8% (+70)	Harassment has seen an increasing trend and exceptional results since May. February had the highest numbers in the last three years.
Sexual Offences on children under 16	+16.9%	+16.3%	+60% (+45)	There is an exceptionally high number of offences recorded in August and this is due to the historical sexual abuse reported at St John's Primary School in Baxenden.
Shoplifting	+9.8%	+4.6%	+15% (71)	The highest number of offences occurred in June. Figures were lower in July, August and September and then increased during quarter three.
Other theft	+10.9%	+9.1%	+2.6% (+21)	October, December and January had exceptionally high numbers of other theft offences.